

Fire

SAFETY

&

Burns Prevention

What is a burn injury?

Burn is a type of **injury to skin caused by heat, electricity, chemicals or radiation**

- 🔥 Burns are **very** painful
- 🔥 Treatment is expensive
- 🔥 Takes a long time to heal



Types of burns



Flame Burn



Scald Burn



Electric Burn



Radiation Burn

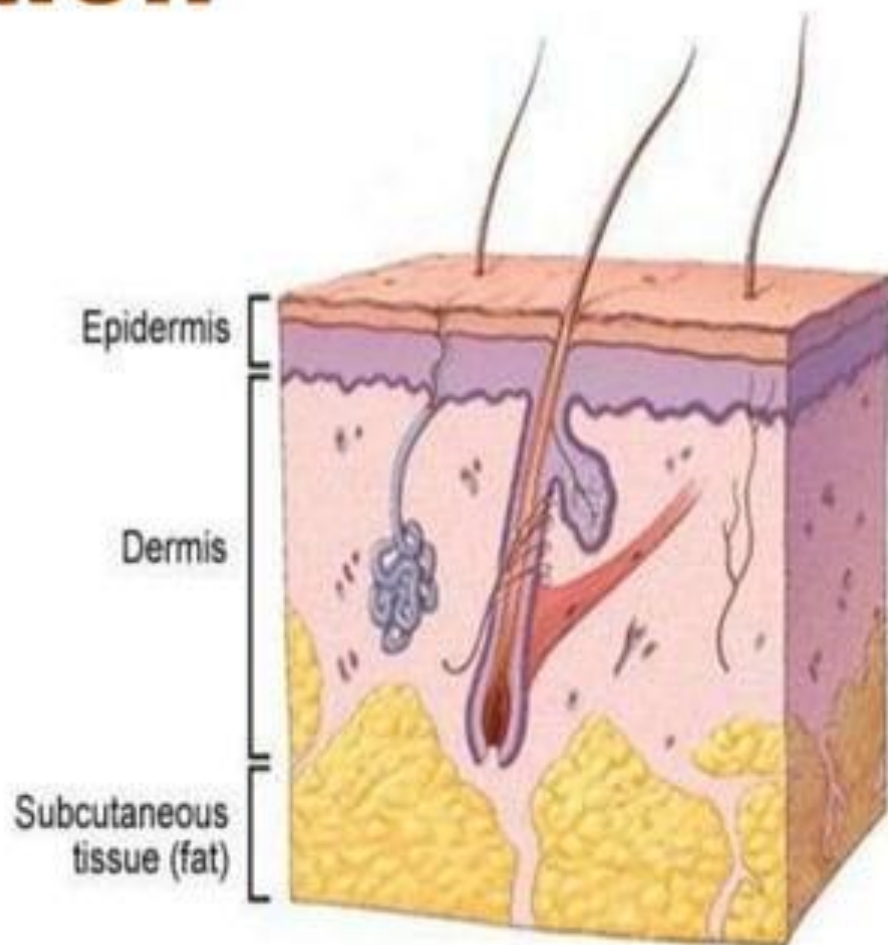


© Carl Stock Photo - cap6353734

Chemical Burn

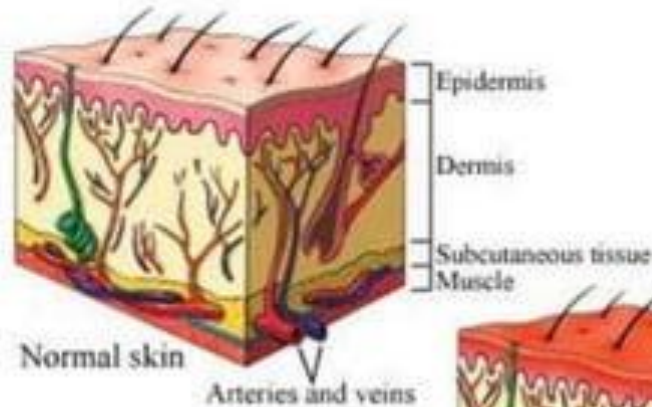
Skin layers and its function

- 🔥 Protects the underlying tissues from injury and invasion by germs
- 🔥 The temperature of the body is regulated by the skin
- 🔥 The pigment in the skin protects the individual from the harmful effects of the sun's rays

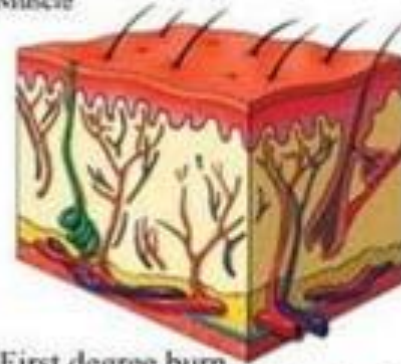


Varying degrees of burn injury

Normal



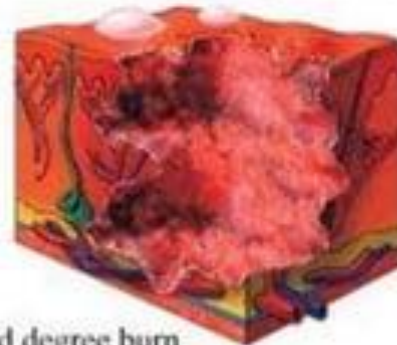
1st Degree



2nd Degree

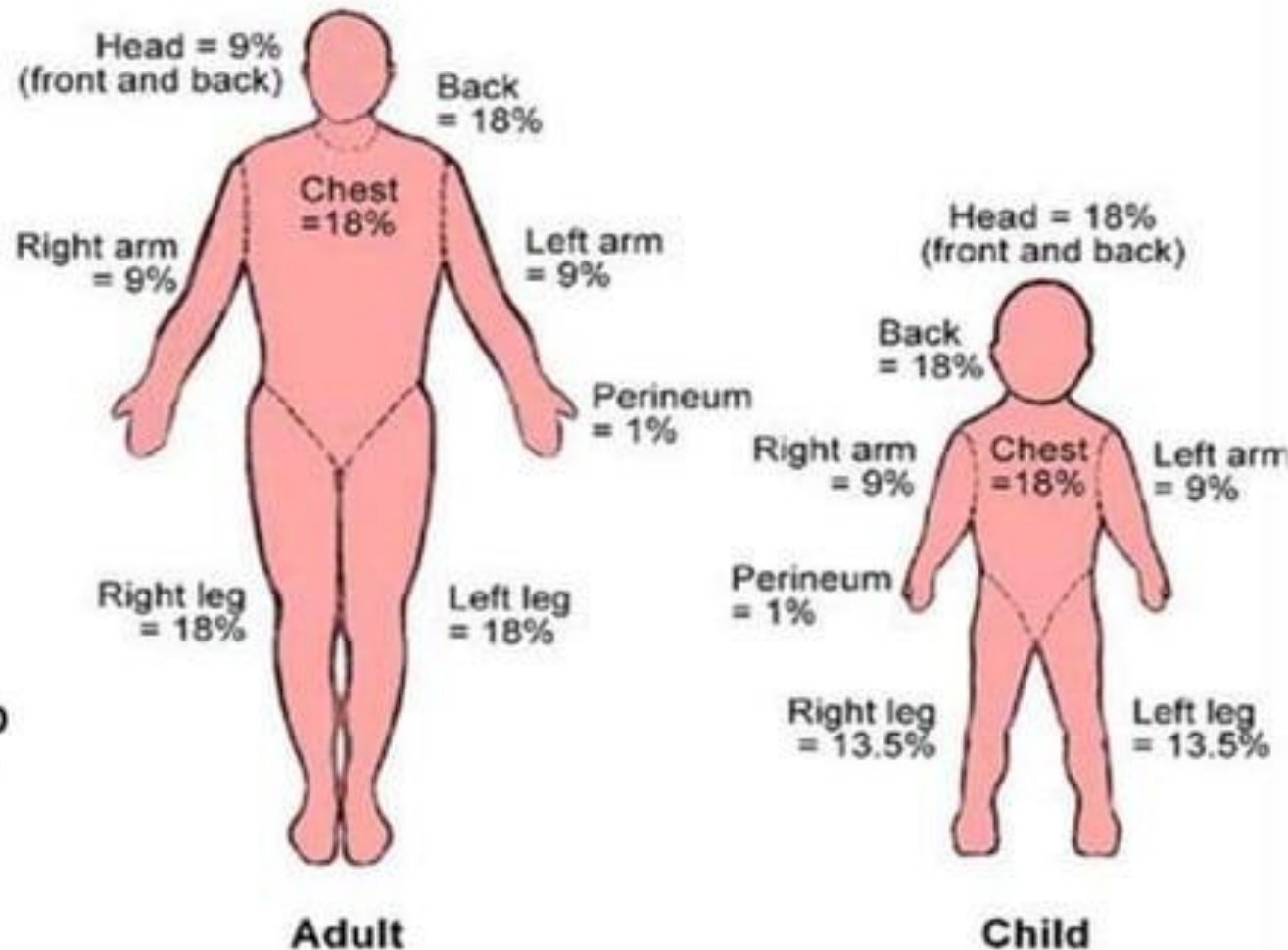


3rd Degree



How To Measure Severity Of Burn ?

- 🔥 Judged by the area of body surface involved
- 🔥 One hand surface is equal to 1% of the body surface



Situations

Situations

IF THERE IS A FIRE IN YOUR HOUSE

- 🔥 Raise an alarm
- 🔥 Call the **fire brigade** on **101**
- 🔥 Once out remain out
- 🔥 Don't re-enter the house
- 🔥 Don't wait to collect your possessions



www.shutterstock.com - 175408697



Situations

IF YOU ARE TRAPPED IN A SMOKE-FILLED ROOM

- 🔥 Cover your nose and mouth with a wet cloth.
- 🔥 Crawl to a safe area



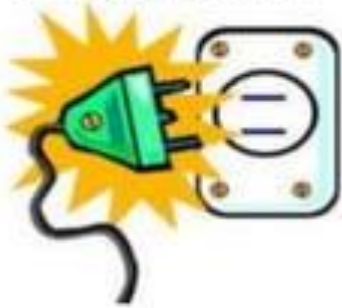
IF YOU ARE IN A TALL BUILDING AND THERE IS FIRE

- 🔥 Use the stairs for coming down
- 🔥 Never use the lift
- 🔥 Always use fire exit



Situations

ELECTRICITY



FOR ELECTRICAL FIRE

- 🔥 Turn off mains
- 🔥 Then put sand on the fire
- 🔥 Never pour water on a connected or live wire



Situations

IF CLOTHES CATCH FIRE

- 🔥 Pour water if available
- 🔥 Rap a blanket around
- 🔥 Stop where you are; drop to the ground
- 🔥 Do not run



Situations

IF YOU SMELL GAS

- 🔥 Close Cylinder valve and Burner knob
- 🔥 Open doors and windows; Ventilate
- 🔥 Do not touch electric switches
- 🔥 If smell persists, inform your dealer



First aid

&

Treatment

First aid for burn injuries

**BEFORE GIVING
FIRST AID, WASH
BOTH YOUR HANDS**

DONT'S

- 🔥 Do not use ice cold or hot water
- 🔥 Do not apply ghee, tooth paste or turmeric powder



First aid for burn injuries

When you get a burn injury...



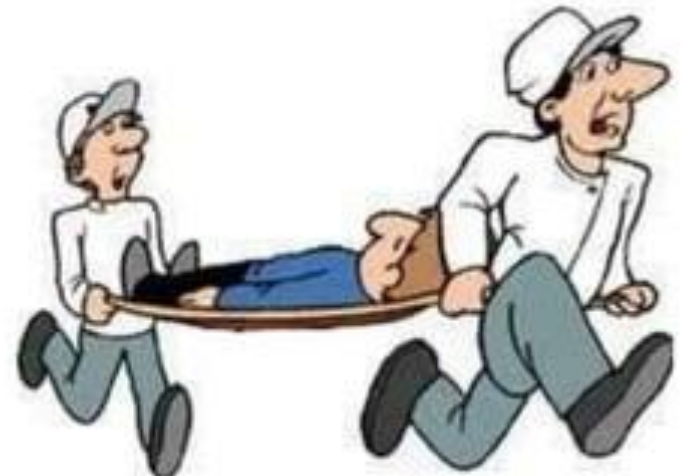
- 1** Hold your hand under running tap water for 2 mins



- 2** Apply only burn-ointment like silver-sulphadizine cream

In case of serious burn injury

- 🔥 Transport the patient to the nearest hospital dealing with burns
- 🔥 Do not give the burnt person anything to eat until doctor has seen him
- 🔥 Give water to drink
- 🔥 Remove jewelry as later swelling appears and it will be difficult to remove
- 🔥 **Do not remove clothes of patient**



A large, stylized letter 'S' with a vibrant fire gradient from red at the top to yellow at the bottom. It has a thick, metallic silver outline with a slight 3D effect.

afety

Measures

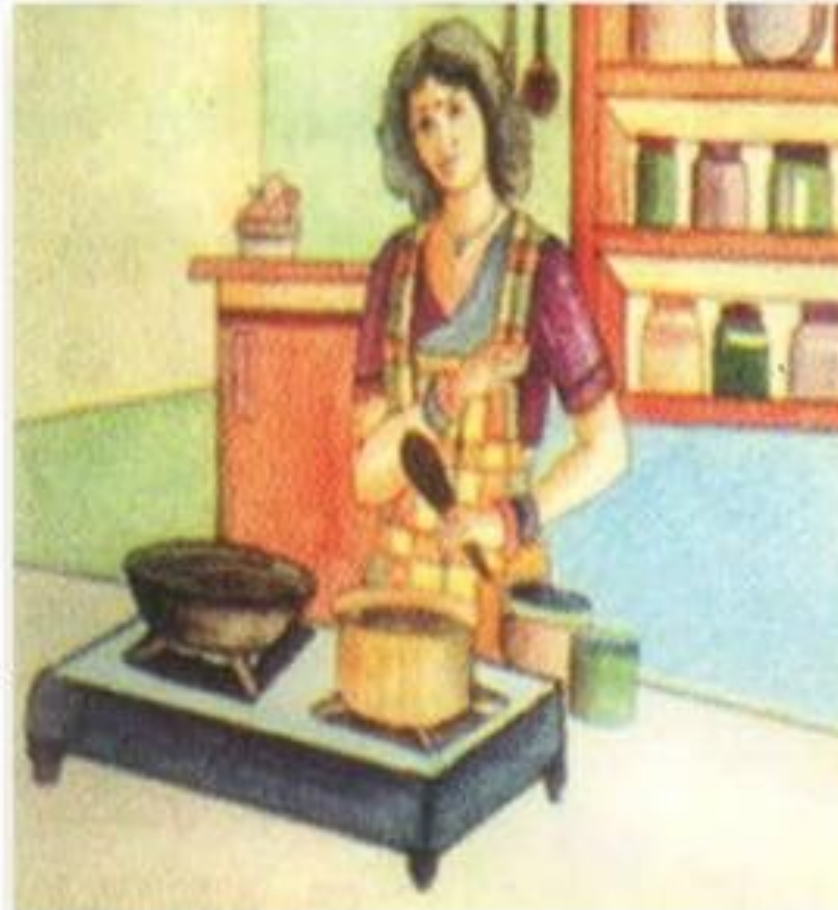
Precautions & Safety Measures



Precautions & Safety Measures

COOKING PRACTICES

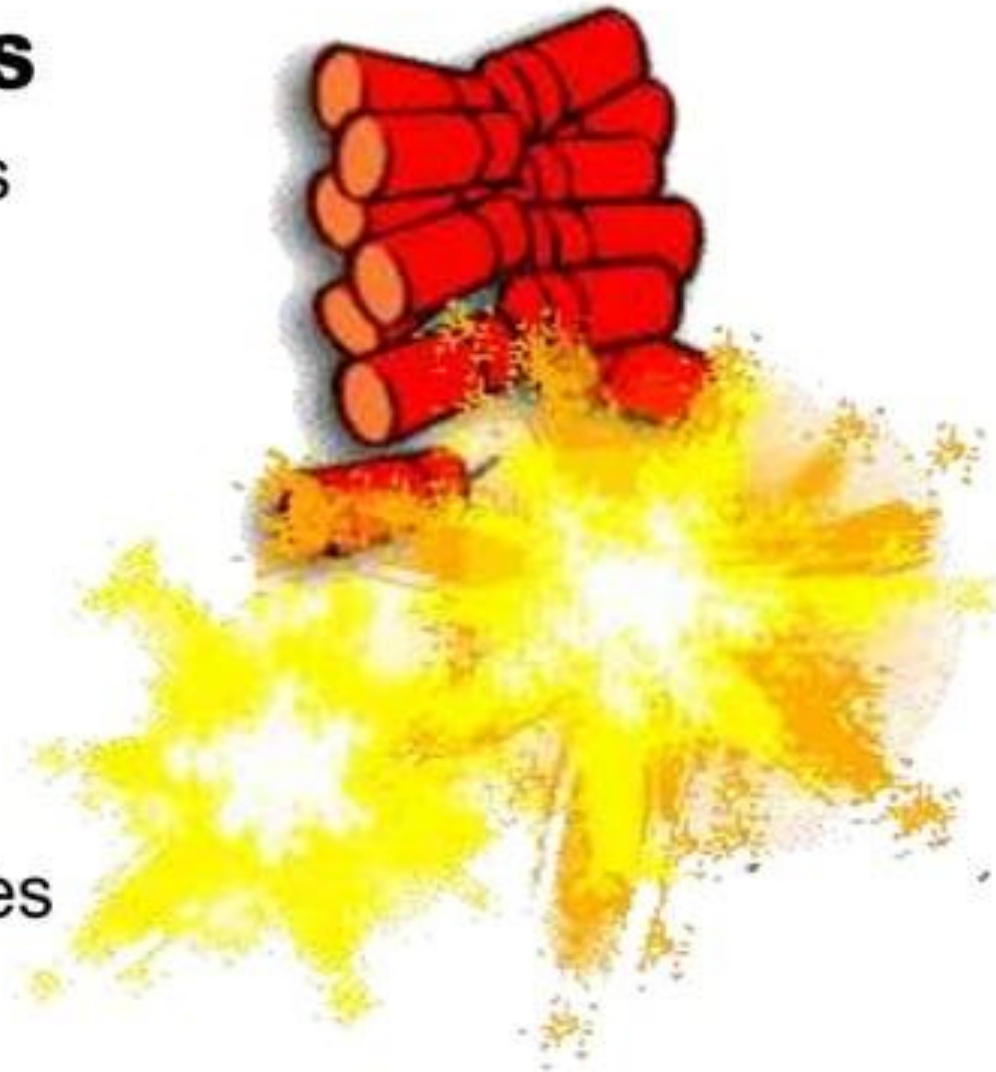
- 🔥 Avoid wearing loose clothes while cooking
- 🔥 Tie up your hair
- 🔥 Use tongs to lift vessels
- 🔥 Cooking should always be done on a platform or a table



Precautions & Safety Measures

USE OF FIREWORKS

- 🔥 Earlier during festivals
- 🔥 Now is used for all celebrations
 - 🔥 victory in a match
 - 🔥 victory in elections
 - 🔥 wedding celebrations
 - 🔥 even birthday parties



Precautions & Safety Measures

USE OF FIREWORKS

- 🔥 Never light fireworks under confinement in a metal container
- 🔥 Never keep extra fireworks in your pocket
- 🔥 Store fireworks in metal containers away from all heat sources



Precautions & Safety Measures

USE OF FIREWORKS

Safety Tips

- 🔥 Always wear close fitting clothes while lighting fireworks
- 🔥 Keep some buckets of water handy while lighting fireworks



Precautions & Safety Measures

USE OF FIREWORKS

How to light a firecracker

- 🔥 Always light **Anar** on the ground or on a flat surface
- 🔥 Light glitters sticks away from body
- 🔥 Light rockets in proper glass bottles in an open place, directing upward towards sky



Skin

Donation

Skin donation

- ✧ Skin & eyes can be donated only after death, within 6 hours
- ✧ Skin is used on burnt patients
- ✧ Skin is stored in skin bank at 4 to 6 degrees

Skin Donation

Lets Donate Skin after Death
and Gift a Life



THANK YOU